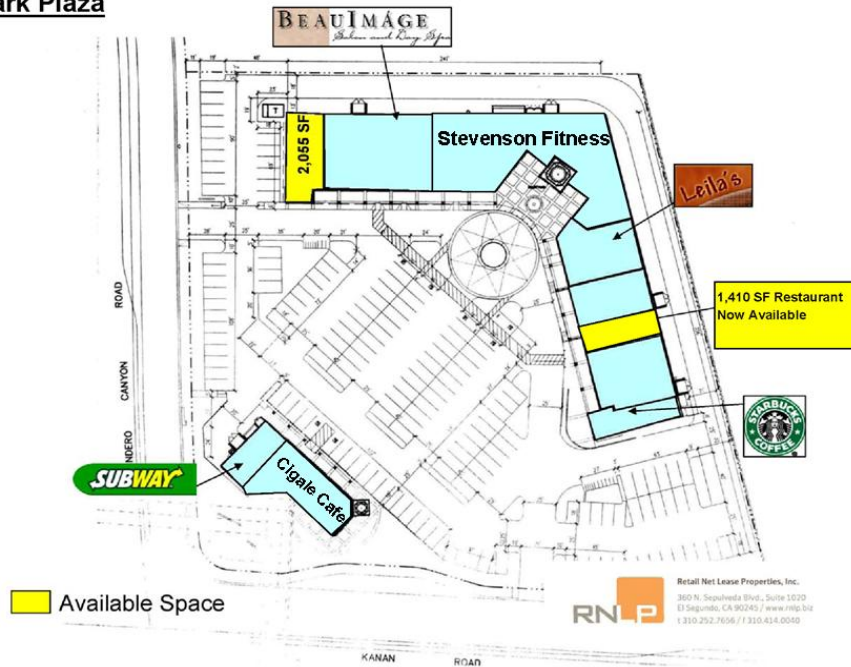


# FOR LEASE

## OAK PARK PLAZA NEC Kanan Road & Lindero Canyon Oak Park, California

Oak Park Plaza



*For Leasing Information Contact:*

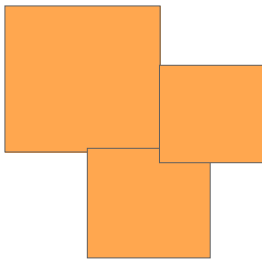
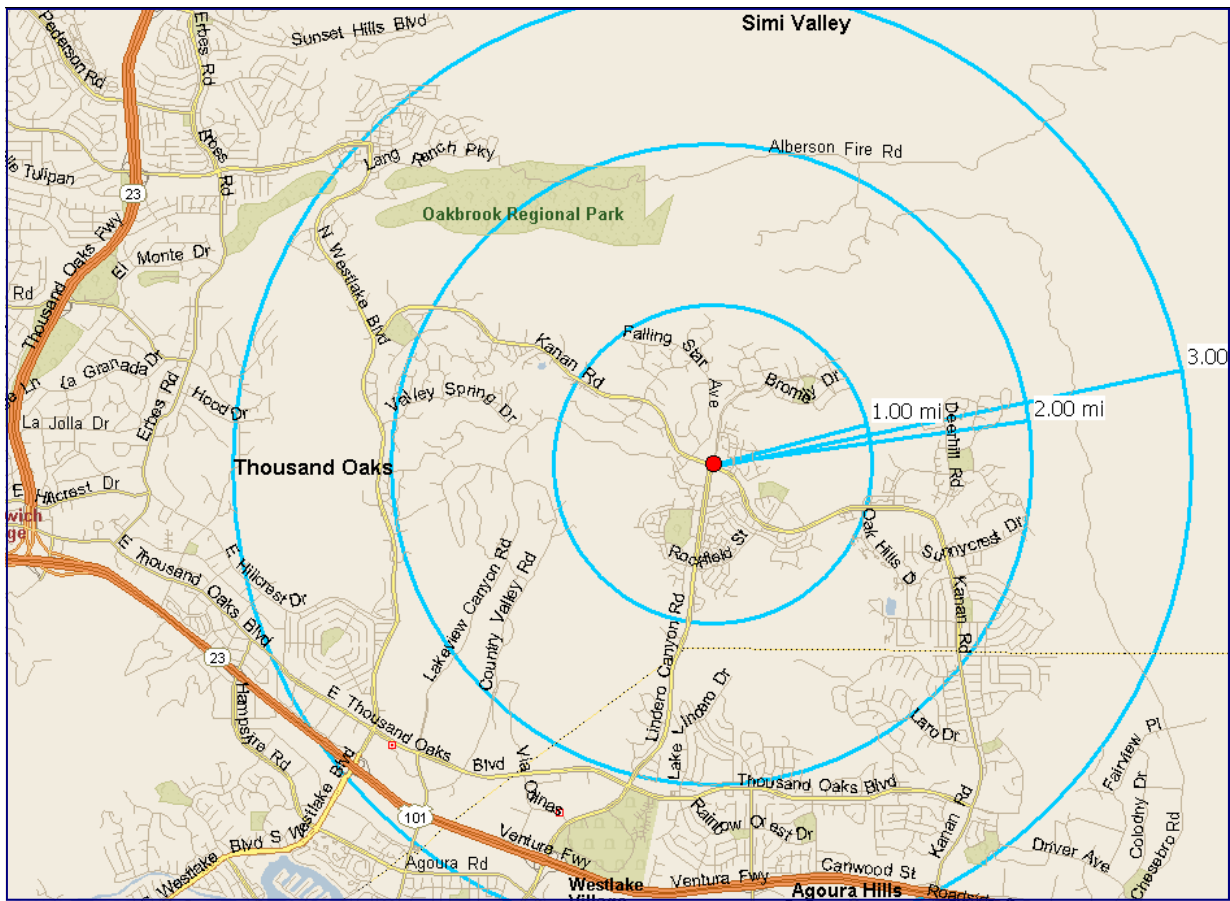
Charlie Cangelosi  
310-252-7656 x 156  
charlie@rnlp.biz  
www.rnlp.biz

- ◆ 1,410 sq.ft. restaurant space available
- ◆ 2,055 sq.ft. now available for retail/office/medical
- ◆ High income Oak Park, North Ranch, Agoura Hills area
- ◆ Looking for established food users
- ◆ Excellent parking at 5/1000
- ◆ Co-tenancy includes, Starbucks, Subway, Beau Image Day Spa, Lelia's Fine Dining (Zagat rated), Cigale Café & Stevenson Fitness.



	<u>1 Mile</u>	<u>2 Mile</u>	<u>3 Mile</u>
Daytime Employment:	1,877	3,073	39,238
Population:	7,960	24,586	51,360
Average Household Income:	\$145,831	\$149,059	\$142,935

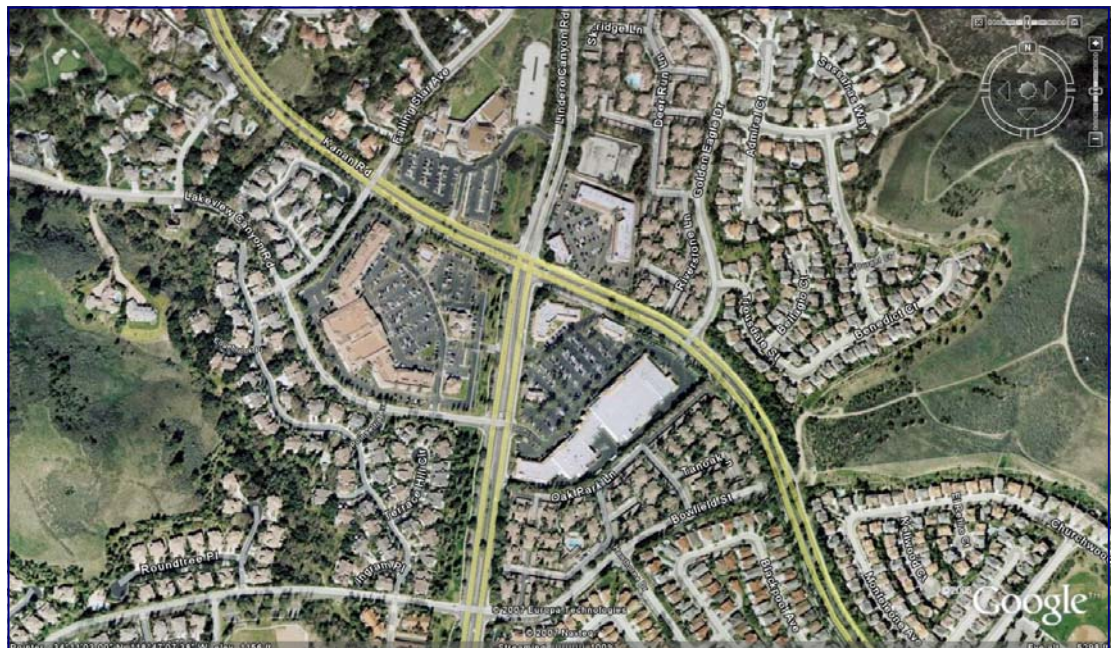
This information has been furnished from sources which we believe to be reliable; however, we do not guarantee its accuracy and assume no liability. Do not rely on any of the information contained herein without verifying it yourself



# Oak Park Plaza

Oak Park, CA

For Leasing  
Information  
Contact:  
Charlie  
Cangelosi,  
310-252-7656



## Pop-Facts: Demographic Quick Facts 2006 Report

**Radius:KANAN RD AT LINDERO CANYON RD, OAK PARK, CA 91377, aggregate**

**Radius:KANAN RD AT LINDERO CANYON RD, OAK PARK, CA 91377, aggregate**

**Radius:KANAN RD AT LINDERO CANYON RD, OAK PARK, CA 91377, aggregate**

Description	0.00 - 1.00 miles		0.00 - 2.00 miles		0.00 - 3.00 miles	
	Radius	%	Radius	%	Radius	%
<b>Population</b>						
2011 Projection	7,960		24,586		51,360	
2006 Estimate	7,492		23,377		48,063	
2000 Census	6,907		21,959		44,254	
1990 Census	4,571		16,171		35,905	
Growth 1990 - 2000	51.10%		35.79%		23.25%	
<b>Households</b>						
2011 Projection	2,948		8,831		18,221	
2006 Estimate	2,757		8,330		16,906	
2000 Census	2,524		7,755		15,426	
1990 Census	1,660		5,598		11,984	
Growth 1990 - 2000	52.05%		38.53%		28.72%	
<b>2006 Est. Population by Single Classification Race</b>						
White Alone	6,525	87.09	20,524	87.80	41,873	87.12
Black or African American Alone	69	0.92	209	0.89	511	1.06
American Indian and Alaska Native Alone	20	0.27	50	0.21	117	0.24
Asian Alone	646	8.62	1,824	7.80	3,726	7.75
Native Hawaiian and Other Pacific Islander Alone	5	0.07	22	0.09	51	0.11
Some Other Race Alone	60	0.80	195	0.83	639	1.33
Two or More Races	168	2.24	552	2.36	1,145	2.38
<b>2006 Est. Population Hispanic or Latino</b>						
Hispanic or Latino	309	4.12	976	4.18	2,441	5.08
Not Hispanic or Latino	7,183	95.88	22,401	95.82	45,622	94.92
<b>2006 Tenure of Occupied Housing Units</b>						
Owner Occupied	2,245	81.43	6,881	82.61	14,276	84.44
Renter Occupied	513	18.61	1,449	17.39	2,630	15.56
<b>2006 Average Household Size</b>						
	2.72		2.81		2.84	



## Pop-Facts: Demographic Quick Facts 2006 Report

Radius:KANAN RD AT LINDERO CANYON RD, OAK PARK, CA 91377, aggregate

Radius:KANAN RD AT LINDERO CANYON RD, OAK PARK, CA 91377, aggregate

Radius:KANAN RD AT LINDERO CANYON RD, OAK PARK, CA 91377, aggregate

Description	0.00 - 1.00 miles		0.00 - 2.00 miles		0.00 - 3.00 miles	
	Radius	%	Radius	%	Radius	%
<b>2006 Est. Households by Household Income</b>	2,757		8,330		16,906	
Income Less than \$15,000	131	4.75	382	4.59	720	4.26
Income \$15,000 - \$24,999	104	3.77	285	3.42	494	2.92
Income \$25,000 - \$34,999	117	4.24	353	4.24	736	4.35
Income \$35,000 - \$49,999	202	7.33	599	7.19	1,182	6.99
Income \$50,000 - \$74,999	317	11.50	950	11.40	2,197	13.00
Income \$75,000 - \$99,999	384	13.93	1,197	14.37	2,558	15.13
Income \$100,000 - \$149,999	584	21.18	1,823	21.88	3,896	23.05
Income \$150,000 - \$249,999	564	20.46	1,597	19.17	3,070	18.16
Income \$250,000 - \$499,999	234	8.49	709	8.51	1,255	7.42
Income \$500,000 and over	120	4.35	435	5.22	798	4.72
<b>2006 Est. Average Household Income</b>	\$145,831		\$149,059		\$142,935	
<b>2006 Est. Median Household Income</b>	\$110,598		\$110,951		\$107,268	
<b>2006 Est. Per Capita Income</b>	\$53,665		\$53,183		\$50,364	

\*In contrast to Claritas Demographic Estimates, "smoothed" data items are Census 2000 tables made consistent with current year estimated and 5 year projected base counts.



# Area Map

Prepared For: RNL  
Project Code:

Order #: 965238557  
Site: 01

KANAN RD AT LINDERO CANYON RD  
OAK PARK, CA 91377  
Coord: 34.184950, -118.785875  
Radius - See Appendix for Details

